

Exam

Name _____

MULTIPLE CHOICE. Choose the one alternative that best completes the statement or answers the question.

- 1) 0° of latitude is found at the _____ and the 90° of latitude is found at the _____. 1) _____
A) North Pole; Prime Meridian B) South Pole; Equator
C) Equator; North Pole D) South Pole; North Pole

Answer: C
Diff: 0 Type: MC

- 2) The most direct example of an atmosphere-lithosphere exchange is 2) _____
A) a volcanic eruption. B) a forest being planted.
C) a wave breaking on a shoreline. D) an active coral reef colony.

Answer: A
Diff: 0 Type: MC

- 3) A snowball that rolls down a hill, gradually gaining more and more mass and rolling 3) _____
faster and faster as it continues, would be an example of a(n)
A) positive feedback system. B) closed system.
C) negative feedback system. D) open system.

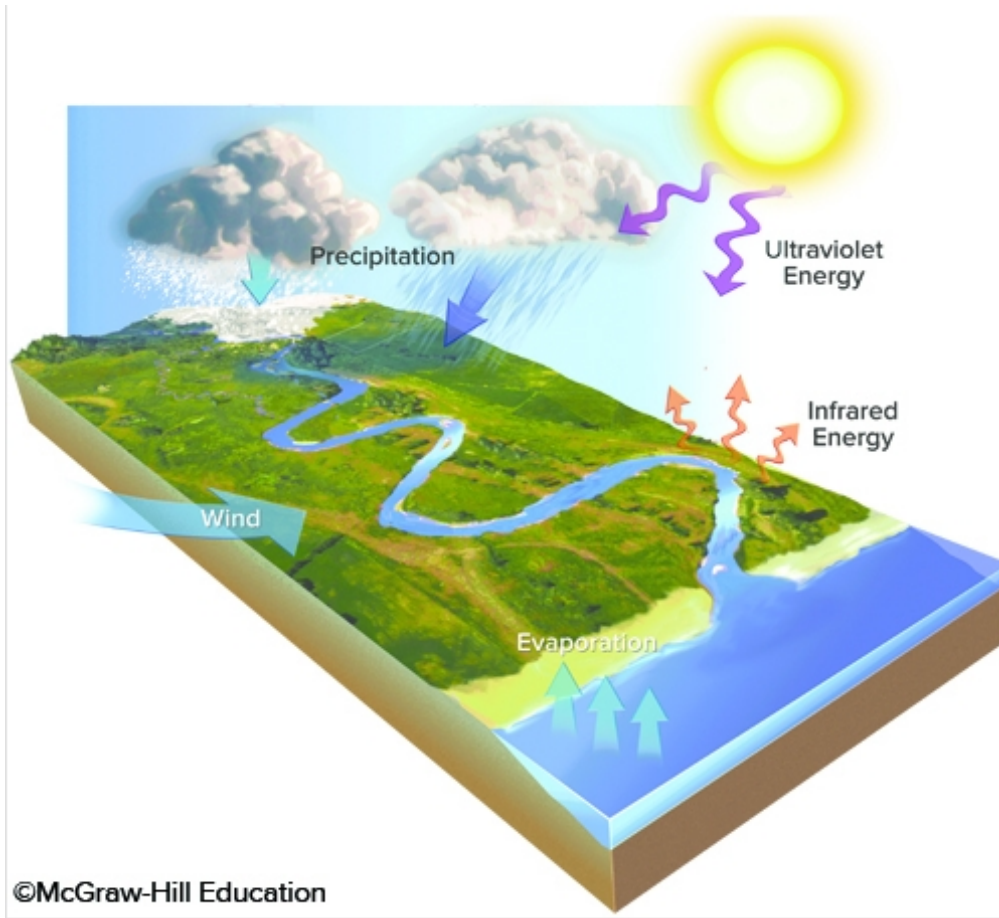
Answer: A
Diff: 0 Type: MC

- 4) A dynamic system refers to a system in which 4) _____
A) matter, energy, or both, are constantly changing their position, amounts, or form.
B) the first law of thermodynamics does not apply.
C) water molecules are constantly increasing in speed over time.
D) motion causes the matter within the system to contain less energy than it would
have contained when sitting still.

Answer: A
Diff: 0 Type: MC

5) Which arrows in this figure indicates ultraviolet energy, an external energy source?

5) _____



A) A

B) B

C) C

D) D

Answer: B

Diff: 0 Type: MC

6) Which of the following natural resources was discussed for the area around St. George, Utah?

6) _____

- A) a large cement plant
- B) both oil fields and floodplains with fertile soil
- C) oil field
- D) All of these choices are correct.
- E) floodplains with fertile soils

Answer: B

Diff: 0 Type: MC

7) Which are true of a hypothesis?

7) _____

- A) It is assumed to be true and requires no further examination.
- B) It is the same thing as a theory.
- C) None of these choices are correct.

Answer: C

Diff: 0 Type: MC

8) The most likely and direct consequence of a reduced rate of "burial" of sediment in the rock cycle would be 8) _____
A) slower rates of uplift of rocks back to the surface.
B) the delayed rate of formation of rock.
C) increased rates of rock deformation.
D) more rapid deposition of more sediment.

Answer: B
Diff: 0 Type: MC

9) Devils Tower was formed by 9) _____
A) sedimentation from river deposits.
B) accumulations of windblown sand.
C) solidification of a magma chamber.

Answer: C
Diff: 0 Type: MC

10) If you wanted to determine how deep a rock layer was below a particular point on the surface, what type of figure would be most useful? 10) _____
A) evolutionary diagram
B) satellite image
C) geologic cross section
D) topographic map
E) shaded relief map

Answer: C
Diff: 0 Type: MC

11) Which of the following geologic resources was discussed for the area around St. George, Utah? 11) _____
A) a large cement plant
B) oil field
C) floodplains with fertile soils
D) All of these choices are correct.
E) both oil field and floodplains with fertile soils only

Answer: E
Diff: 0 Type: MC

12) What specific type of map represents the distribution of rock units and geologic features exposed on the surface? 12) _____
A) topographic map
B) shaded relief map
C) contour map
D) geologic map

Answer: D
Diff: 0 Type: MC

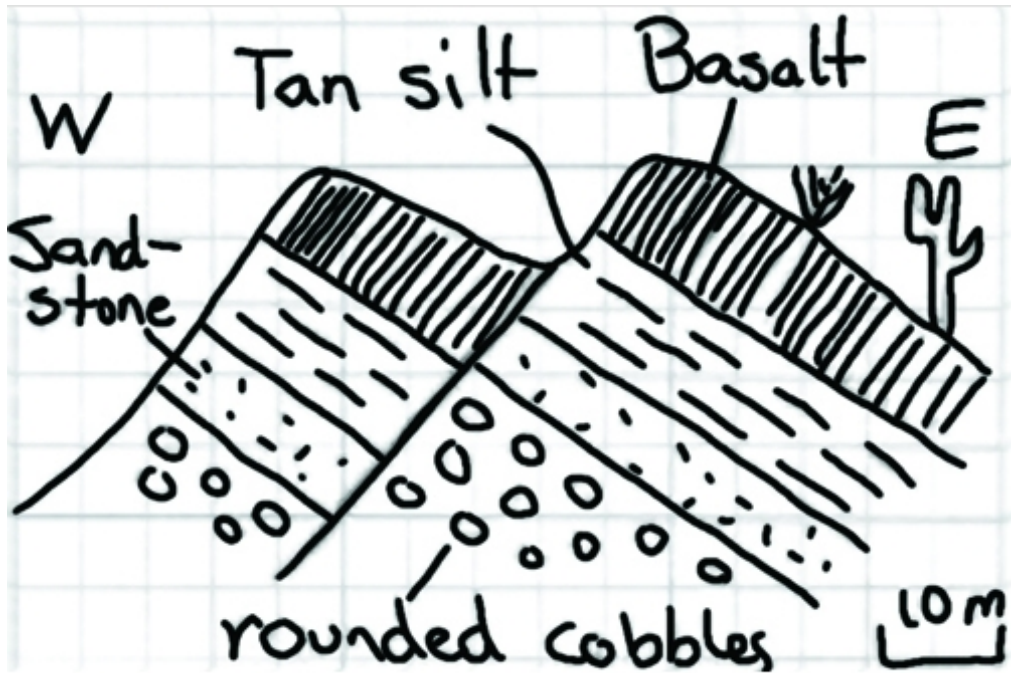
13) Which of the following are ways in which a geologist may determine the density of earth materials? 13) _____

- A) through direct measurement in the laboratory
- B) using instruments to measure the pull of gravity
- C) by measuring the different velocities of seismic waves
- D) All of these choices are correct.

Answer: D

Diff: 0 Type: MC

14) Which of the following may be interpreted from the sketch? 14) _____



©McGraw-Hill Education

- A) The fault is younger than all the rock layers present.
- B) The oldest environment represented may have been a river channel, based upon the shape of the clasts.
- C) A fault has cut through the rock layers.
- D) All of these choices are correct.

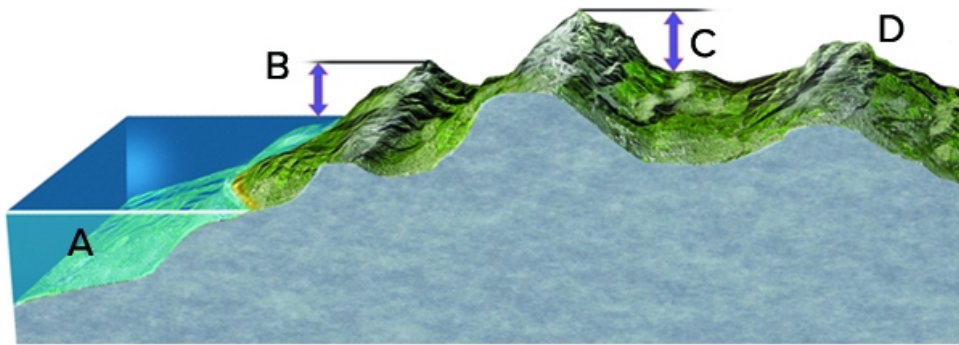
Answer: D

Diff: 0 Type: MC

- 15) Which of the following is data rather than an interpretation? 15) _____
- A) The ages of volcanic centers near Yellowstone indicate that North America is moving southwest over the mantle.
 - B) Some trees along Yellowstone Lake were flooded when the land north of the lake rose because of magma at depth.
 - C) Rising and sinking of the land around Yellowstone is related to underlying magma.
 - D) All of these are data rather than interpretations.
 - E) All of these are interpretations rather than data.

Answer: E
 Diff: 0 Type: MC

- 16) Which letter on the accompanying figure indicates the elevation? 16) _____



©McGraw-Hill Education

- A) A B) B C) C D) D

Answer: B
 Diff: 0 Type: MC

- 17) Which of the following is NOT a way(s) that an oil field might impact people living nearby? 17) _____
- A) increasing likelihood of an oil spill
 - B) increasing job opportunities
 - C) improving the local economy
 - D) increasing likelihood of volcanic eruptions

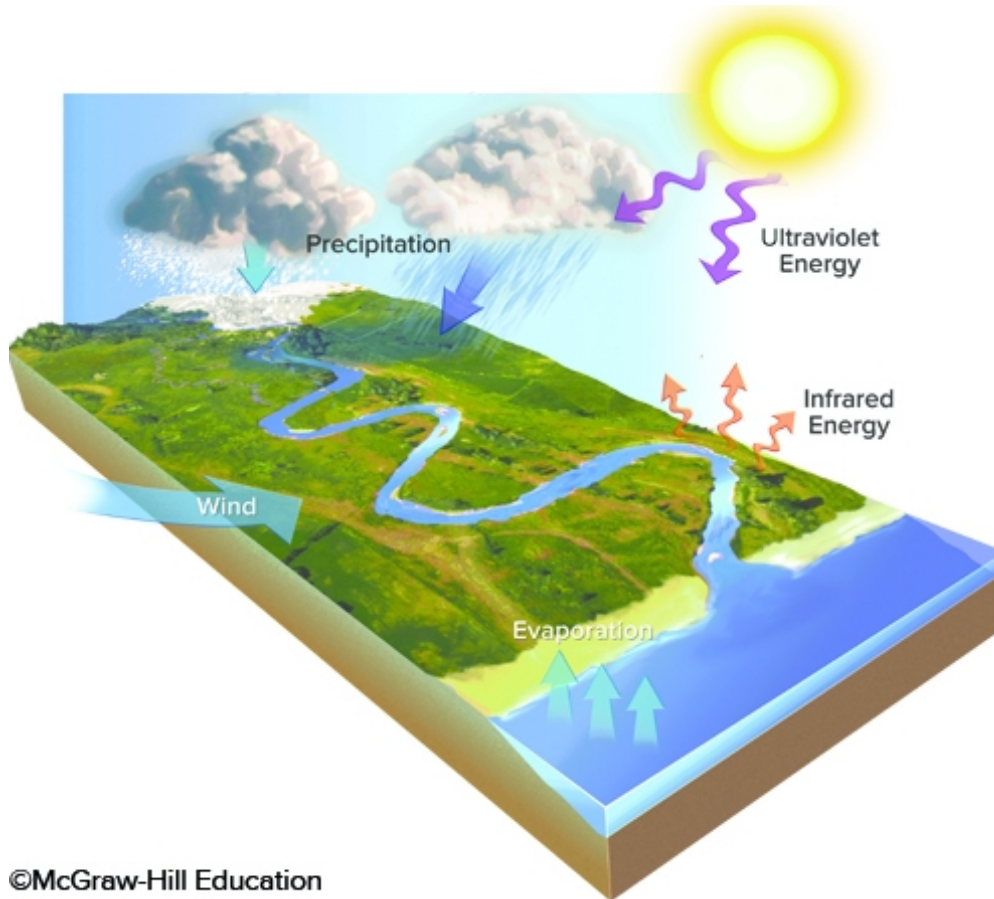
Answer: D
 Diff: 0 Type: MC

- 18) Rainfall in mountain ranges might impact people living nearby by 18) _____
- A) increasing erosion in mountains.
 - B) increasing flooding hazards.
 - C) water flowing into streams and rivers, increasing water supply.
 - D) increasing mudslide hazards.
 - E) All of these choices are correct.

Answer: E
 Diff: 0 Type: MC

19) Which arrows in this figure indicates evaporation?

19) _____



©McGraw-Hill Education

A) A

B) B

C) C

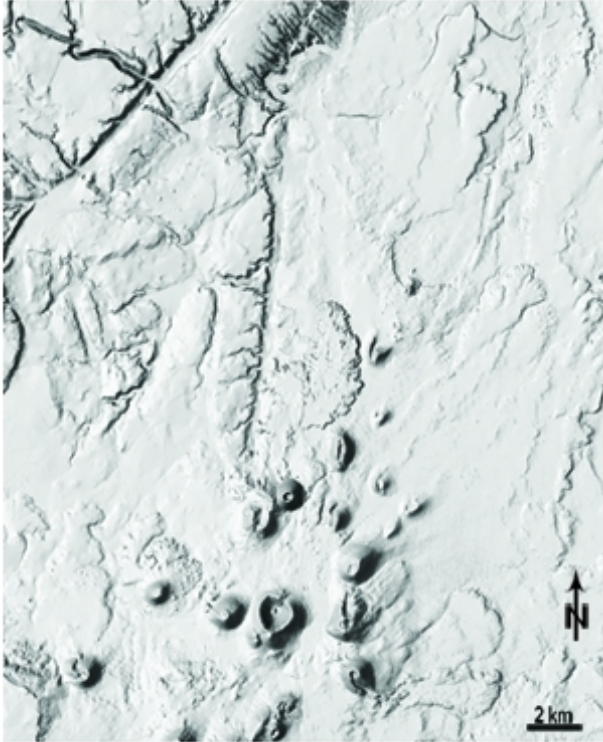
D) D

Answer: D

Diff: 0 Type: MC

20) What type of map is shown here?

20) _____



©McGraw-Hill Education

- A) topographic map with contours
- C) satellite image

- B) geologic map
- D) shaded-relief map

Answer: D

Diff: 0 Type: MC

21) If it is 9:00 a.m. in your time zone, two time zones west of you the clock will say

21) _____

A) 11:00 a.m.

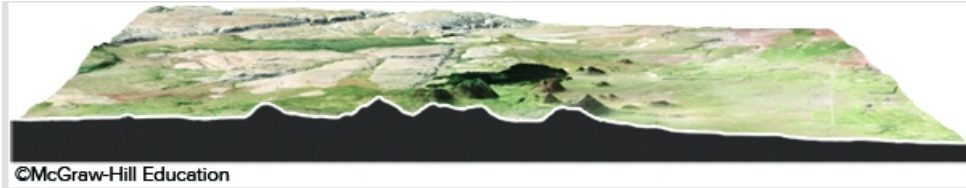
B) 7:00 a.m.

Answer: B

Diff: 0 Type: MC

22) This image would be best used in what situation?

22) _____



- A) The average gradient for a particular area needs to be known to study surface runoff.
- B) A petroleum company wants to know if any geologic structures in the area could contain oil pools.
- C) The thickness of the surface layer of rock needs to be determined for a construction site.

Answer: A

Diff: 0 Type: MC

23) The Moon and Sun cause the tides in Earth's oceans because of

23) _____

- A) magnetic pull.
- B) heat.
- C) gravity.

Answer: C

Diff: 0 Type: MC

24) The main cause of the Rapid City flood of 1972 was

24) _____

- A) poor design and poor construction of a large concrete dam.
- B) rapid melting of glaciers in the Black Hills because of global warming.
- C) intense rainfall from a thunderstorm that resulted in a flash flood.
- D) failure of a dam because of a large landslide into the reservoir.
- E) All of these choices are correct.

Answer: C

Diff: 0 Type: MC

25) Which of the following is an example of quantitative data?

25) _____

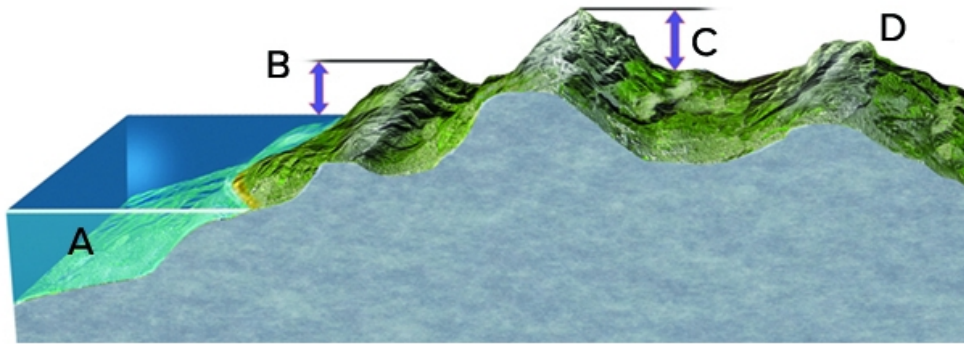
- A) When held, one rock feels heavier than another rock.
- B) The volcano is releasing much steam.
- C) Volcanoes are dangerous.
- D) North America is moving across Earth's surface several centimeters per year.
- E) The river has flooded a low-lying area.

Answer: D

Diff: 0 Type: MC

26) Which letter on the accompanying figure indicates depth?

26) _____



©McGraw-Hill Education

A) A

B) B

C) C

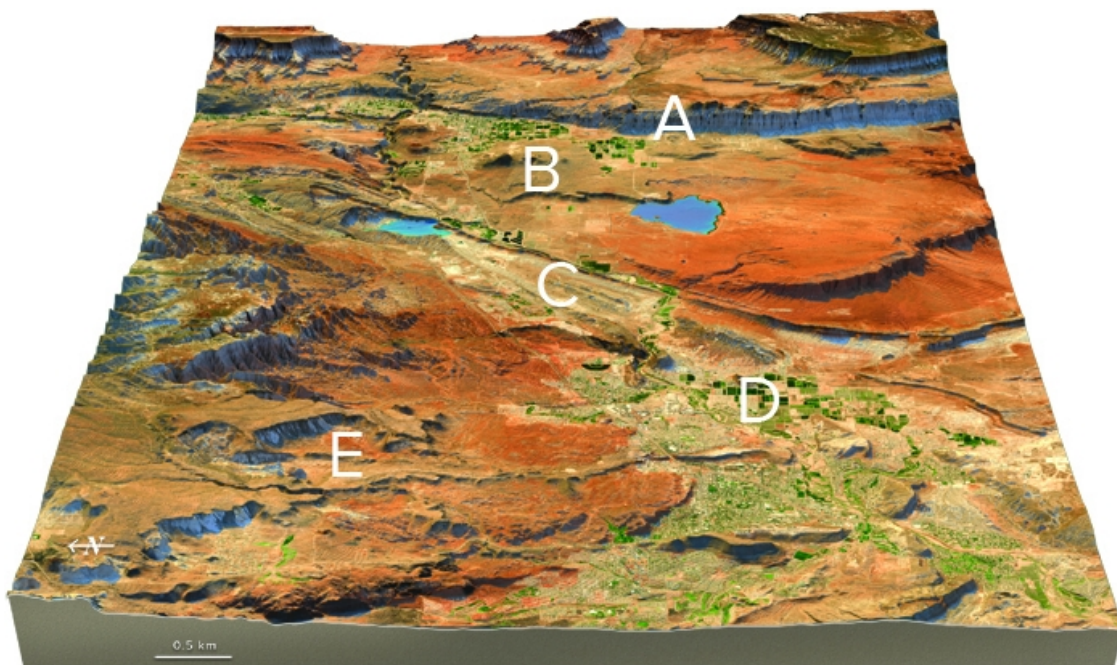
D) D

Answer: A

Diff: 0 Type: MC

27) Which of the features labeled on the accompanying figure was discussed as a possible source of earthquakes?

27) _____



©McGraw-Hill Education

A) the cliff at A

B) the volcano at B

C) pumping of the oil field at C

D) shaking during large floods at D

E) landslides off the mountains at E

Answer: A

Diff: 0 Type: MC

- 28) Which of the following is true about forces and energy imposed on Earth from space? 28) _____
- A) Sun's electromagnetic energy is all blocked by Earth's protective atmosphere.
 - B) Internal processes within the Moon produce light during the night.
 - C) Our massive Sun is the only object that exerts a gravitational pull on Earth.
 - D) All of these choices are correct.
 - E) None of these choices are correct.

Answer: E
Diff: 0 Type: MC

- 29) Which of the following is an example of quantitative data? 29) _____
- A) The steam coming from the mountain was dark gray in color.
 - B) The rocks were too hot to touch.
 - C) The rocks were dark gray and angular.
 - D) Augustine volcano represents a dangerous situation.
 - E) None of these choices are correct.

Answer: E
Diff: 0 Type: MC

- 30) Rates in the Earth system 30) _____
- A) are nearly always very fast.
 - B) are nearly always very slow.
 - C) can never be calculated accurately.
 - D) span the range from very rapid to very slow.

Answer: D
Diff: 0 Type: MC

- 31) Radioactive decay in the Earth, especially in the Earth's crust, creates a tremendous amount of 31) _____
- A) heat.
 - B) pressure.

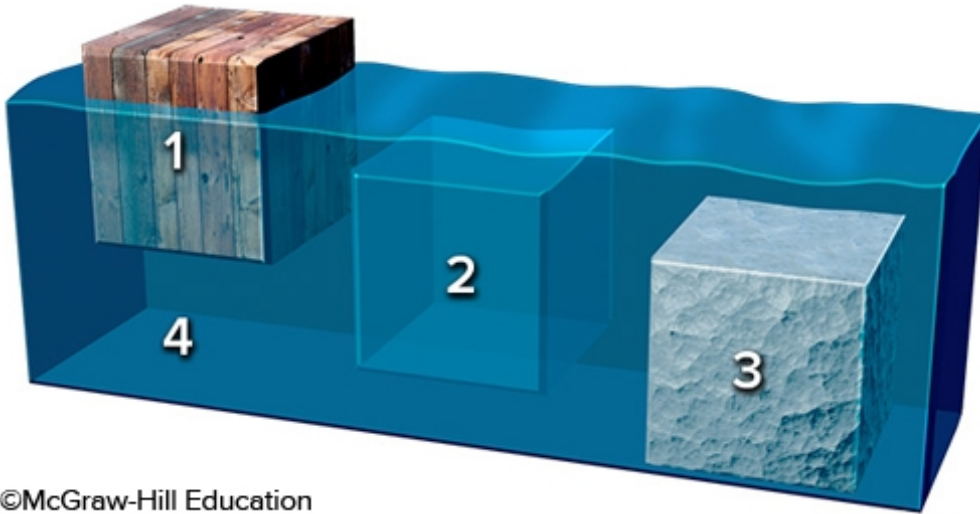
Answer: A
Diff: 0 Type: MC

- 32) If a description of sediment states that it contains large, angular fragments that are mostly red in color, what type of data would this represent? 32) _____
- A) Quantitative
 - B) Numerical
 - C) Qualitative
 - D) Measurement
 - E) None of these choices are correct.

Answer: C
Diff: 0 Type: MC

33) This figure shows three blocks in water. Which of these materials is the least dense?

33) _____



©McGraw-Hill Education

A) block 1

B) block 2

C) block 3

D) the water 4

Answer: A

Diff: 0 Type: MC

34) Which of the following was mentioned in the opening two-page spread of Chapter 1 (The Nature of Earth Science)?

34) _____

A) Volcanoes

B) Oceans

C) Storms

D) Mountains

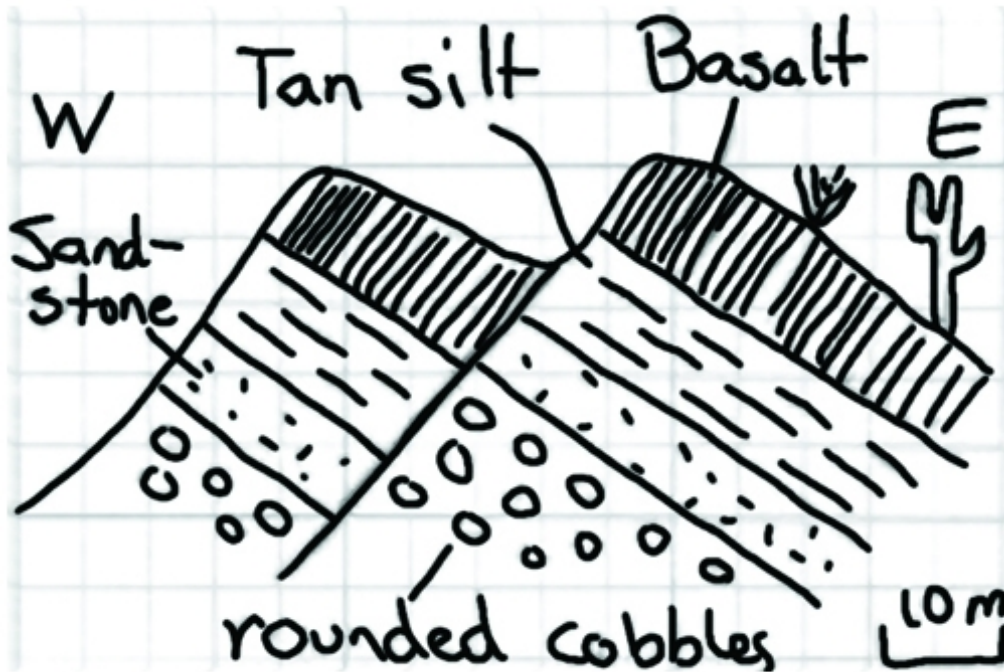
E) All of these were mentioned.

Answer: E

Diff: 0 Type: MC

35) What may be interpreted from this sketch?

35) _____



©McGraw-Hill Education

- A) The basalt is younger than the fault.
- B) The tan silt layer is likely the oldest layer present.
- C) None of these choices are correct.

Answer: C

Diff: 0 Type: MC

36) Which of the following statements is true about the transfer of energy, matter, or momentum in the atmosphere?

36) _____

- A) No transfer of energy, matter, or momentum can occur in the polar part of the atmosphere.
- B) Energy transfer occurs when water changes state between solid, liquid, or gas.
- C) Momentum is usually transferred from the surface upward.
- D) Matter is transferred so effectively that the spatial distribution of matter in the atmosphere is uniform.

Answer: B

Diff: 0 Type: MC

37) All of the following are likely effects of deforestation except

37) _____

- A) increased rate of destruction of plant and animal habitats.
- B) increased runoff into rivers and streams.
- C) increased rate at which carbon dioxide is extracted out of the atmosphere.
- D) increased rate of soil erosion.

Answer: C

Diff: 0 Type: MC

- 38) The difference between open and closed systems is that 38) _____
- A) open systems are much simpler in terms of the number of interactions between objects in the system.
 - B) open systems can acquire matter and energy, but closed systems cannot.
 - C) open systems occur on land and closed systems occur in the ocean.
 - D) open systems are not predictable but closed systems are.

Answer: B
Diff: 0 Type: MC

- 39) Continents differ in appearance from ocean basins because 39) _____
- A) each has its own geologic history.
 - B) each has its own climate.
 - C) each contains different fossils.

Answer: A
Diff: 0 Type: MC

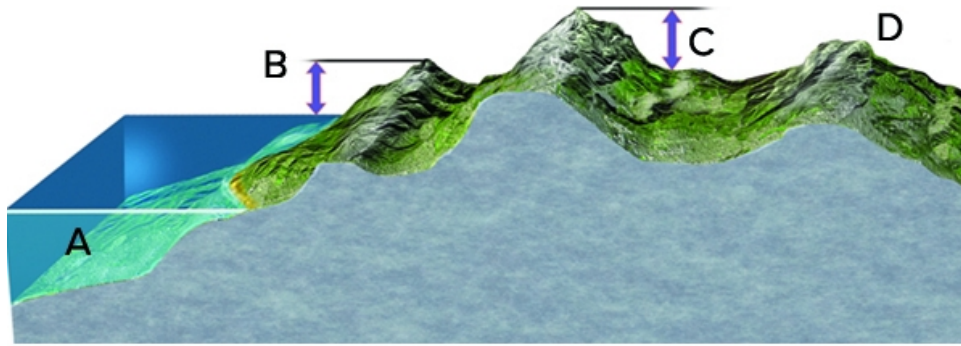
- 40) Choose appropriate way(s) that hot springs might impact people living nearby: 40) _____
- A) provides geothermal power
 - B) increases likelihood of earthquakes
 - C) enables easy transportation of goods

Answer: A
Diff: 0 Type: MC

- 41) What type of figure would you use to portray the relative thicknesses of rock units stacked on top of one another? 41) _____
- A) satellite image
 - B) topographic map
 - C) stratigraphic section
 - D) shaded relief map
 - E) evolutionary diagram

Answer: C
Diff: 0 Type: MC

42) Which letter on the accompanying figure indicates the amount of topographic relief? 42) _____



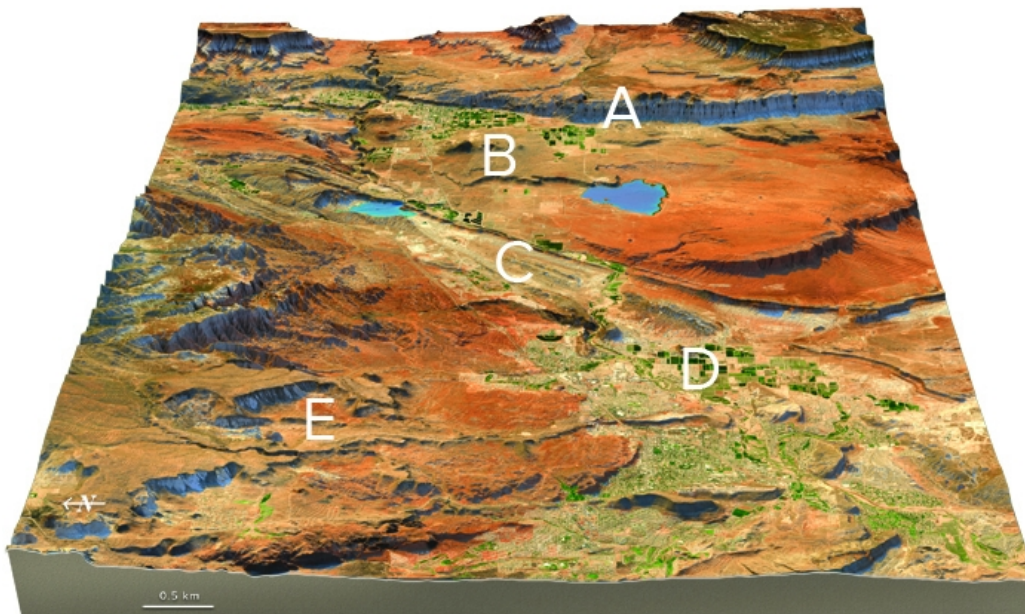
©McGraw-Hill Education

- A) A
- B) B
- C) C
- D) D

Answer: C

Diff: 0 Type: MC

43) Which of the features labeled on the accompanying figure was discussed as a possible source of earthquakes? 43) _____



©McGraw-Hill Education

- A) the cliff at A
- B) the volcano at B
- C) pumping of the oil field at C
- D) shaking during large floods at D
- E) landslides off the mountains at E

Answer: A

Diff: 0 Type: MC

- 49) If two places have the same latitude but different longitudes, 49) _____
- A) the two places are directly north or south of each other.
 - B) the places will be directly north or south of each other on some map projections but not others.
 - C) the two places are directly east or west of each other.
 - D) the places will be directly east or west of each other on some map projections but not others.

Answer: C
Diff: 0 Type: MC

- 50) Which of the following map or diagram would best show you the shape of the land surface? 50) _____
- A) stratigraphic section
 - B) geologic map
 - C) satellite image
 - D) shaded-relief map

Answer: D
Diff: 0 Type: MC

- 51) Elevation variations in the land's surface might best be represented by a(n) 51) _____
- A) outcrop.
 - B) geologic map.
 - C) topographic profile.

Answer: C
Diff: 0 Type: MC

- 52) Choose appropriate way(s) that volcanoes might impact people living nearby 52) _____
- A) increasing likelihood of volcanic eruptions.
 - B) increasing job opportunities.
 - C) improving the local economy.
 - D) increasing likelihood of an oil spill.

Answer: A
Diff: 0 Type: MC

- 53) Which of the following is true about gravity? 53) _____
- A) The mass of the Earth causes a downward pull on objects on Earth.
 - B) Gravity of the Sun and Moon exert a pull on Earth.
 - C) Gravity causes ice, water, and rocks to move downhill.
 - D) All of these choices are correct.

Answer: D
Diff: 0 Type: MC

- 54) Which of the following geologic hazards was NOT discussed for the area around St. George, Utah? 54) _____
- A) earthquakes from a fault along the Hurricane cliffs
 - B) flooding from the main river
 - C) volcanic eruptions
 - D) flash flooding from the mountains
 - E) All of these were discussed.

Answer: E
Diff: 0 Type: MC

- 55) The largest object in the solar system is 55) _____
- A) the Earth's Moon.
 - B) Jupiter.
 - C) the Sun.
 - D) Earth.
 - E) Saturn.

Answer: C
Diff: 0 Type: MC

- 56) Earth science can help us learn about Earth's past by studying 56) _____
- A) how global climate has changed since the ice ages.
 - B) how life in the past was different than today.
 - C) why a landscape looks the way it does.
 - D) why continents and oceans are different.
 - E) All of these choices are correct.

Answer: E
Diff: 0 Type: MC

- 57) The Earth's orbit around the Sun is almost circular. Therefore, Earth receives about the same amount of year-round 57) _____
- A) light and precipitation.
 - B) heat and precipitation.
 - C) heat and light.

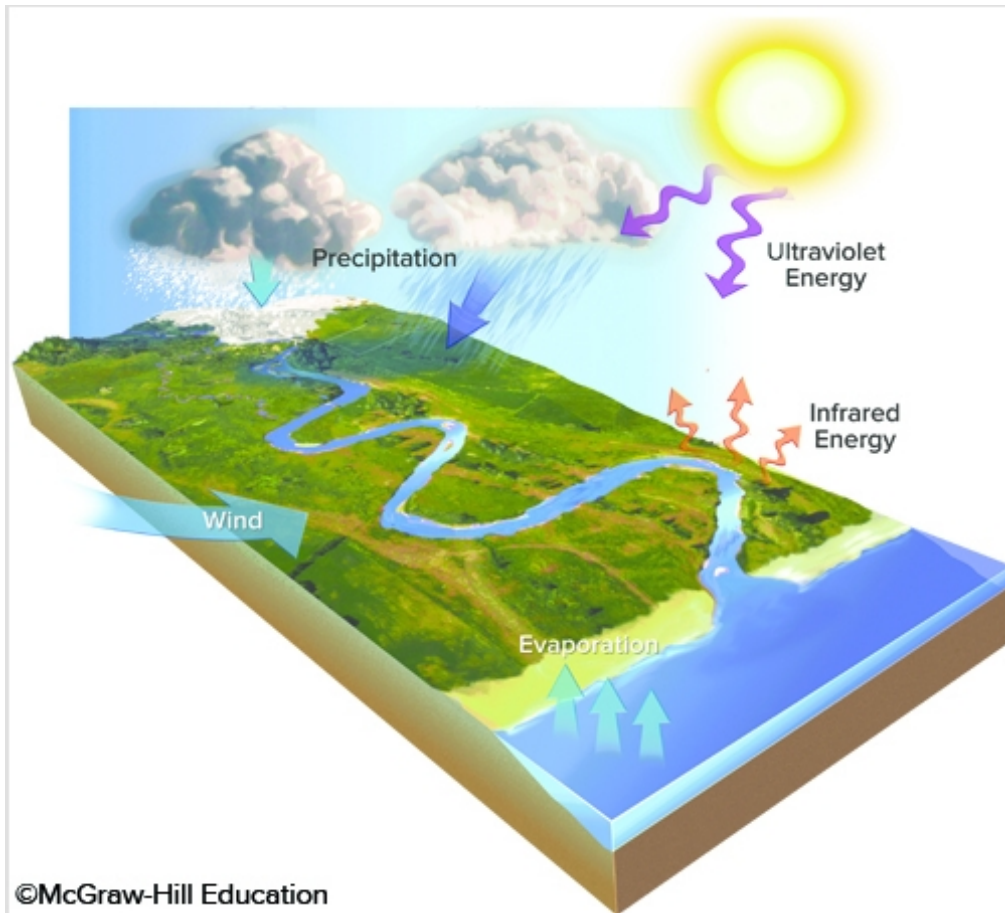
Answer: C
Diff: 0 Type: MC

- 58) What happens to material that is hotter than its surrounding material deep within the Earth? 58) _____
- A) The hot material slowly moves up toward the surface.
 - B) The hot material moves slowly down toward the core.
 - C) Nothing. The hot material doesn't move at all.

Answer: A
Diff: 0 Type: MC

59) Which arrows in this figure indicates infrared energy, which has been converted from ultraviolet energy?

59) _____



A) A

B) B

C) C

D) D

Answer: C

Diff: 0 Type: MC

60) What type of map depicts the shape of the land surface by showing the elevation of the land surface with a series of lines called contours?

60) _____

A) satellite image

B) shaded relief map

C) geologic map

D) topographic map

Answer: D

Diff: 0 Type: MC

61) Slopes in flatter areas are

61) _____

A) cliffs.

B) elevated.

C) gentle.

D) indexes.

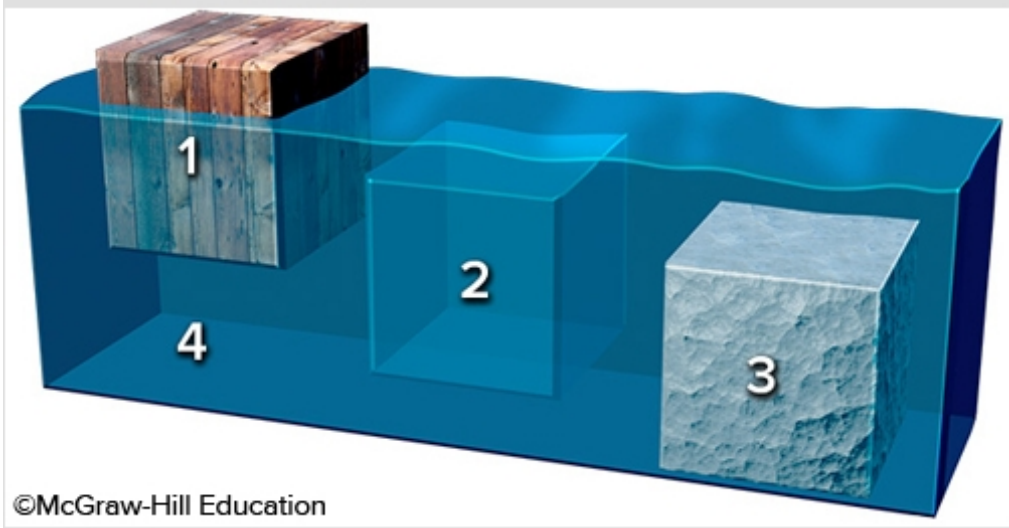
Answer: C

Diff: 0 Type: MC

- 62) Which of the following could be associated with a steep slope? 62) _____
- A) closely spaced contour lines B) a cliff
 C) a mountain side D) All of these choices are correct.

Answer: D
 Diff: 0 Type: MC

- 63) This figure shows three blocks in water. Which of these materials is the densest? 63) _____



- A) block 1 B) block 2 C) block 3 D) the water 4

Answer: C
 Diff: 0 Type: MC

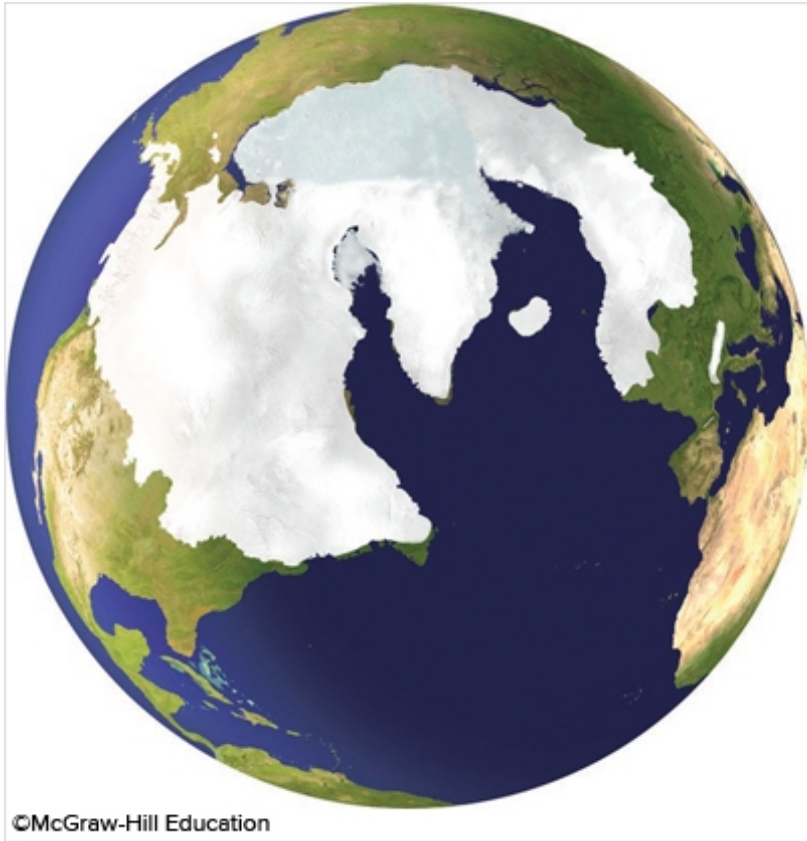
- 64) Which of the following is NOT a way earth science informs us about Earth's past? 64) _____
- A) why a landscape looks the way it does today
 B) why continents and oceans are different
 C) how life in the past was different than today
 D) how past global climate was different than today
 E) how the first second of the universe differed from a second today

Answer: E
 Diff: 0 Type: MC

- 65) Which type of map or diagram would best indicate elevation of the land surface? 65) _____
- A) stratigraphic section B) topographic map
 C) shaded-relief map D) satellite image

Answer: B
 Diff: 0 Type: MC

66) Continental ice sheets were more common 28,000 years ago than they are today because 66) _____



- A) the Earth had more water then than now.
- B) the Earth was farther away from the Sun then than now.
- C) the Earth was cooler then than now.

Answer: C

Diff: 0 Type: MC

67) Which of the following are ways that the atmosphere interacts with Earth's surface? 67) _____

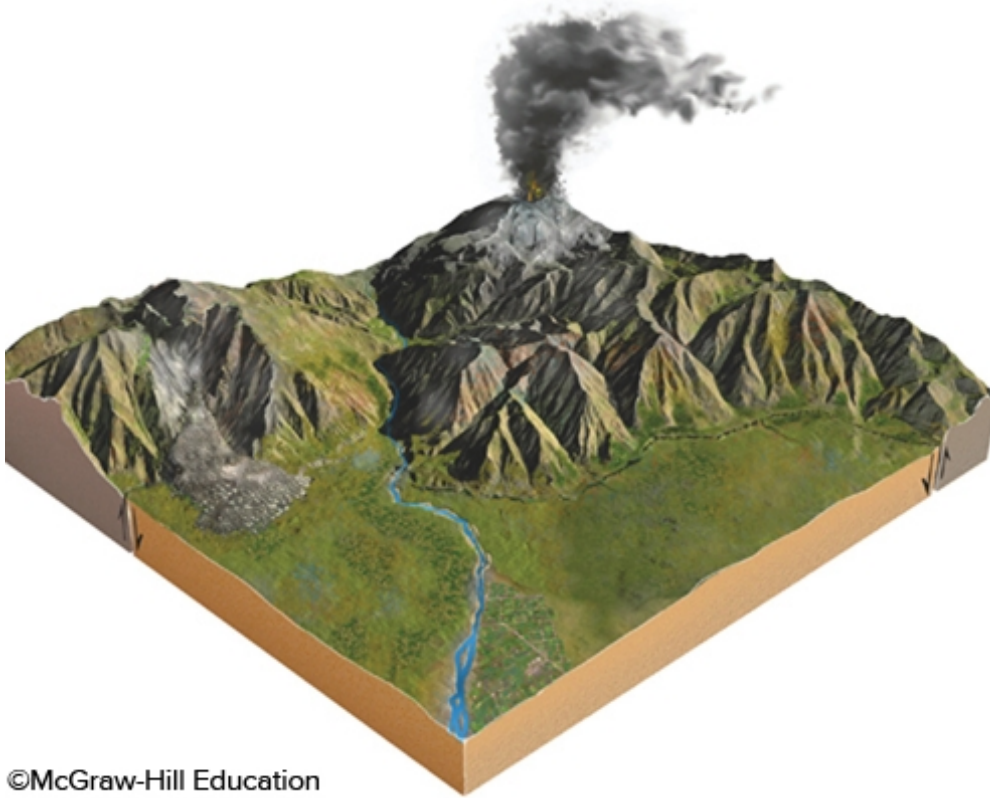
- A) Some energy that strikes the earth is converted into infrared energy.
- B) Earth's atmosphere blocks most of the Sun's harmful ultraviolet radiation.
- C) Liquid water on the surface can evaporate, becoming water vapor in the atmosphere.
- D) The atmosphere includes a low percentage of water vapor, most of which comes from the oceans.
- E) All of these choices are correct.

Answer: E

Diff: 0 Type: MC

68) Which potential geologic hazard is NOT represented by a feature on this figure?

68) _____



©McGraw-Hill Education

- A) contaminated groundwater
- B) a volcano
- C) a landslide
- D) flood-prone areas
- E) an earthquake

Answer: A

Diff: 0 Type: MC

69) What does the type of evolutionary diagrams discussed in the textbook show?

69) _____

- A) how one creature evolved into another creature
- B) evolution of the ways topographic maps have been drawn during history
- C) changing of fossils up through a stratigraphic section
- D) the sequence of events that deposited the rocks and formed the landscape

Answer: D

Diff: 0 Type: MC

70) Which of the following is considered one of the outer planets? 70) _____
A) Moon
B) Jupiter
C) Mars
D) Venus
E) None of these choices are correct.

Answer: B
Diff: 0 Type: MC

71) Quantitative data may include 71) _____
A) specific temperature data.
B) chemistry of water in a stream.
C) size measurements of sediments.
D) age of a rock.
E) All of these choices are correct.

Answer: E
Diff: 0 Type: MC

72) The hydrologic cycle includes all of the following processes except 72) _____
A) precipitation. B) evaporation. C) uplift. D) runoff.

Answer: C
Diff: 0 Type: MC

73) Slopes that drop or rise sharply in elevation are 73) _____
A) contours. B) plains. C) steep.

Answer: C
Diff: 0 Type: MC

74) Which of the following geologic resources was discussed for the area around St. George, Utah? 74) _____
A) oil field
B) a large cement plant
C) floodplains with fertile soils
D) an oil field and floodplains with fertile soils
E) All of these choices are correct.

Answer: D
Diff: 0 Type: MC

75) A dry climate might impact how people live by increasing

75) _____

- A) the likelihood of volcanic activity.
- B) the risk of drought and other water shortages.
- C) both the risk of drought and other water shortages and irrigation needs.
- D) irrigation needs.
- E) the likelihood of earthquakes.

Answer: C

Diff: 0 Type: MC

76) When you shake fish food into in an aquarium, you are contributing to a(n)

76) _____

- A) closed system.
- B) positive feedback system.
- C) open system.
- D) negative feedback system.

Answer: C

Diff: 0 Type: MC

77) What type of map is shown here?

77) _____



- A) shaded-relief map
- C) geologic map

- B) satellite image
- D) topographic map with contours

Answer: D

Diff: 0 Type: MC

- 78) One of the main roles of plants in biogeochemical cycles is to 78) _____
- A) decrease the amount of time that water remains in contact with rocks and soils.
 - B) reduce the rate of weathering.
 - C) extract carbon dioxide from the atmosphere.
 - D) harden the soils.

Answer: C

Diff: 0 Type: MC

- 79) Which of the following is data rather than an interpretation? 79) _____
- A) There is an area of low topography southwest of Yellowstone National Park.
 - B) Volcanism in Yellowstone overlies an area of hotter-than-average mantle.
 - C) The low topography southwest of Yellowstone formed when North America moved over a hot spot.
 - D) Recent volcanism at Yellowstone is related to the process that caused the low topography.

Answer: A

Diff: 0 Type: MC

- 80) Which are true of a hypothesis? 80) _____
- A) It can be tested for validity.
 - B) It may be scrapped or amended after testing.
 - C) It may be tentatively assumed.
 - D) All of these choices are correct.

Answer: D

Diff: 0 Type: MC

- 81) Compared to the outer planets in our solar system, the inner planets are 81) _____
- A) contain more gas.
 - B) have better developed planetary rings.
 - C) larger.
 - D) rocky and so are called terrestrial planets.
 - E) None of these choices are correct.

Answer: D

Diff: 0 Type: MC

- 82) A key step in developing a new explanation is 82) _____
- A) making observations about a place or process.
 - B) collecting new observations to test predictions.
 - C) proposing an interpretation that can be tested.
 - D) asking questions about the observations.
 - E) All of these choices are correct.

Answer: E

Diff: 0 Type: MC

- 83) When the lithosphere and biosphere interact, 83) _____
A) plants remove nutrients from the soil and return nutrients to the soil.
B) plants remove nutrients from the soil but return few if any nutrients to the soil.
C) plants return nutrients to the soil but remove few if any nutrients from the soil.
D) plants acquire their nutrients directly from the air so that they do not disturb the nutrient structure in the soil.

Answer: A
Diff: 0 Type: MC

- 84) What specific type of image uses measurements of different wavelengths of light reflecting from a land surface to create a computer-processed image to show the distribution of different types of plants, rocks, and other features? 84) _____
A) geologic map
B) topographic map
C) shaded relief map
D) satellite images

Answer: D
Diff: 0 Type: MC

- 85) A geoscientist performs analyses on a rock to gather data recording its specific chemical composition. This type of data is 85) _____
A) a survey. B) qualitative. C) quantitative.

Answer: C
Diff: 0 Type: MC

- 86) Choose appropriate way(s) that volcanoes might impact people living nearby: 86) _____
A) Volcanic ash provides fertile sediment for growing crops.
B) Ash ejected into the atmosphere blocks sunlight.
C) Projectiles thrown into the air can hit your house.
D) Releases steam and noxious gases into the atmosphere.
E) All of these impact people living nearby.

Answer: E
Diff: 0 Type: MC

- 87) Choose appropriate way(s) that steep cliffs might impact people living nearby 87) _____
A) increases area available to grow crops.
B) increases landslide hazard.
C) easy to build houses on steep cliffs.
D) favorable location for livestock grazing.

Answer: B
Diff: 0 Type: MC

88) What type of map is used primarily to show the shape of the land by simulating light and dark shading on the hills and valleys? 88) _____
A) topographic map B) satellite image
C) geologic map D) shaded relief map

Answer: D
Diff: 0 Type: MC

89) All of the following are typical effects of dam construction except 89) _____
A) protecting towns from flooding.
B) disruption of natural ecosystems.
C) increased amount of sediment carried downstream of the dam.
D) interruption of the normal seasonal variation in flows of water.

Answer: C
Diff: 0 Type: MC

90) Choose appropriate way(s) that hot springs might impact people living nearby 90) _____
A) enables easy transportation of goods.
B) increases likelihood of earthquakes.
C) provides geothermal power.

Answer: C
Diff: 0 Type: MC

91) Which of the following are ways in which a geoscientist may determine the density of earth materials? 91) _____
A) calculating the volume of the object, but not its mass
B) determining the weight of the object, but not its volume
C) None of these choices are correct.

Answer: C
Diff: 0 Type: MC

92) The formula to determine density is 92) _____
A) weight/gravity.
B) volume/mass.
C) mass/volume.
D) gravity/mass.
E) mass/weight.

Answer: C
Diff: 0 Type: MC

93) Topographic maps often have some contour lines that are darker than other contour lines. 93) _____
These darker lines are called
A) contour intervals. B) index contours.

Answer: B
Diff: 0 Type: MC

- 94) Which of the following is true about density and weight? 94) _____
- A) density is lower if you have a larger volume of the same material
 - B) density is higher if you have a larger volume of the same material
 - C) weight depends on the mass of the object and the pull of gravity
 - D) a substance is more dense at night than during the day
 - E) None of these choices are correct.

Answer: C

Diff: 0 Type: MC

- 95) One of the main topics discussed in the opening two-page spread of Chapter 1 (The Nature of Earth Science) was 95) _____
- A) a huge meteorite impact caused the dinosaurs to become extinct.
 - B) that volcanoes have dramatically changed the atmosphere over time.
 - C) that the two sides of North America are very different.
 - D) All of these were mentioned.

Answer: C

Diff: 0 Type: MC

- 96) Which of the following locations is probably least at risk for geologic hazards? 96) _____
- A) near an active fault
 - B) on soils that gently expand when wet
 - C) next to a river in low areas
 - D) on gentle slopes away from mountains
 - E) close to, but upwind of, an active volcano

Answer: D

Diff: 0 Type: MC

- 97) What steps are involved in having a hypothesis become an established theory? 97) _____
- A) The hypothesis is consistent with new data and investigations used to test its predictions.
 - B) The hypothesis makes sense when explained by politicians.
 - C) A United Nations scientific panel votes on whether the hypothesis is accepted.
 - D) A U.S. government agency votes on whether the hypothesis is accepted.

Answer: A

Diff: 0 Type: MC

- 98) Greenwich mean time (GMT) is a system of 98) _____
- A) determining when daylight savings time should go into effect.
 - B) coordinating the rules for what time should appear on a clock, around the world.
 - C) determining what years should be considered leap years and which should not.
 - D) identifying the phase of the lunar cycle.

Answer: B

Diff: 0 Type: MC

99) The Prime Meridian separates 99) _____
A) runs east-west, like the equator.
B) the Eastern Hemisphere from the Western Hemisphere.
C) the Northern Hemisphere from the Southern Hemisphere.
D) places experiencing one day on the calendar from places experiencing another day on the calendar.

Answer: B
Diff: 0 Type: MC

100) The closest object to the Earth is (the) 100) _____
A) Mars. B) Moon. C) Venus. D) Sun.

Answer: B
Diff: 0 Type: MC

101) How does an observation become valid? 101) _____
A) An uncalibrated instrument is used to make a measurement and the measurements recorded.
B) A guess is made to approximate a measurement and the guess is recorded.
C) A series of specific measurements is made, repeated, and recorded.

Answer: C
Diff: 0 Type: MC

102) Which of the following is (are) true for an evolutionary diagram? 102) _____
A) Uses a sequence of geologic diagrams to depict the geologic history of an area.
B) Shows the progression of changes an area undergoes through time.
C) May use block diagrams, cross sections, or maps.
D) All of these choices are correct.

Answer: D
Diff: 0 Type: MC

103) The cycling of chemical substances throughout the biosphere is accomplished through 103) _____
A) the rock cycle.
B) the first law of thermodynamics.
C) vertical transfer of momentum.
D) the work of living things and physical and chemical processes.

Answer: D
Diff: 0 Type: MC

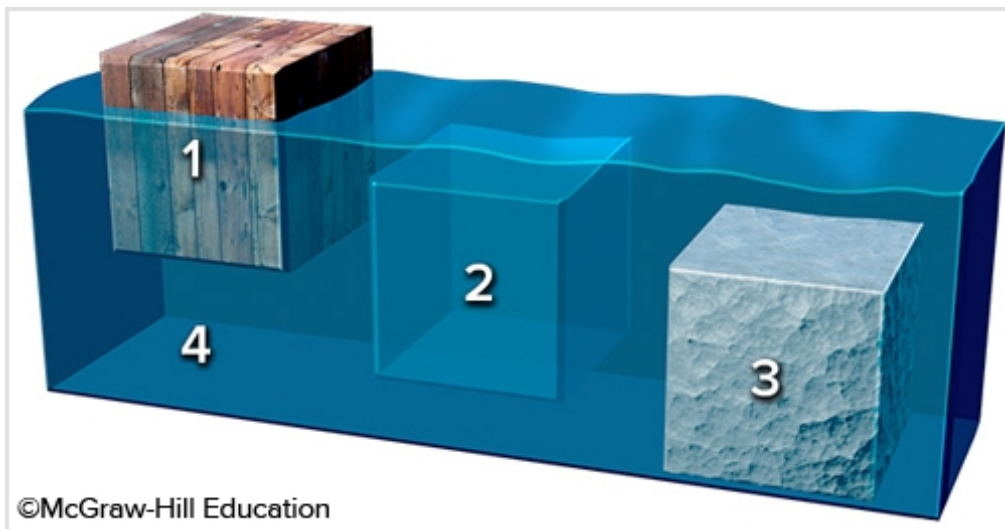
104) The lithosphere refers to the 104) _____
A) solid upper part of the Earth, including the crust and uppermost mantle.
B) plasticky interior of the Earth that moves in response to heating from the interior.
C) molten lava that is ejected from volcanoes.
D) land part of the Earth only.

Answer: A
Diff: 0 Type: MC

- 105) Mt. Rushmore is composed of which type of rock? 105) _____
A) Magma B) Granite C) Basalt D) Sandstone
Answer: B
Diff: 0 Type: MC
- 106) What is the most common type of atoms joined together in a process called nuclear fusion 106) _____
A) hydrogen. B) oxygen. C) nitrogen. D) carbon.
Answer: A
Diff: 0 Type: MC
- 107) Qualitative data may involve which of the following? 107) _____
A) sketches
B) descriptive words
C) labels
D) images
E) All of these choices are correct.
Answer: E
Diff: 0 Type: MC
- 108) Which of the following shows the correct order for a scientific explanation? 108) _____
A) observation - question - hypotheses - predictions - results of investigation - conclusions
B) predictions - hypotheses - results of investigation - question - observation - conclusions
C) hypotheses - question - observation - predictions - results of investigation – conclusions
Answer: A
Diff: 0 Type: MC

109) This figure shows three blocks in water. Which two materials have the same density?

109) _____



- A) block 3 and the water 4
- B) block 2 and the water 4
- C) blocks 2 and 3
- D) blocks 1 and 3
- E) blocks 1 and 2

Answer: B

Diff: 0 Type: MC

Answer Key
Testname: CH1

- 1) C
Diff: 0 Page Ref:
Section: 01.09
- 2) A
Diff: 0 Page Ref:
Section: 01.06
- 3) A
Diff: 0 Page Ref:
Section: 01.04
- 4) A
Diff: 0 Page Ref:
Section: 01.06
- 5) B
Diff: 0 Page Ref:
Section: 01.03
- 6) B
Diff: 0 Page Ref:
Section: 01.16
- 7) C
Diff: 0 Page Ref:
Section: 01.14
- 8) B
Diff: 0 Page Ref:
Section: 01.05
- 9) C
Diff: 0 Page Ref:
Section: 01.15
- 10) C
Diff: 0 Page Ref:
Section: 01.08
- 11) E
Diff: 0 Page Ref:
Section: 01.16
- 12) D
Diff: 0 Page Ref:
Section: 01.07
- 13) D
Diff: 0 Page Ref:
Section: 01.12
- 14) D
Diff: 0 Page Ref:
Section: 01.08
- 15) E
Diff: 0 Page Ref:
Section: 01.13
- 16) B
Diff: 0 Page Ref:
Section: 01.08

Answer Key
Testname: CH1

- 17) D
Diff: 0 Page Ref:
Section: 01.16
- 18) E
Diff: 0 Page Ref:
Section: 01.01
- 19) D
Diff: 0 Page Ref:
Section: 01.03
- 20) D
Diff: 0 Page Ref:
Section: 01.07
- 21) B
Diff: 0 Page Ref:
Section: 01.10
- 22) A
Diff: 0 Page Ref:
Section: 01.08
- 23) C
Diff: 0 Page Ref:
Section: 01.11
- 24) C
Diff: 0 Page Ref:
Section: 01.15
- 25) D
Diff: 0 Page Ref:
Section: 01.12
- 26) A
Diff: 0 Page Ref:
Section: 01.08
- 27) A
Diff: 0 Page Ref:
Section: 01.16
- 28) E
Diff: 0 Page Ref:
Section: 01.03
- 29) E
Diff: 0 Page Ref:
Section: 01.12
- 30) D
Diff: 0 Page Ref:
Section: 01.10
- 31) A
Diff: 0 Page Ref:
Section: 01.03
- 32) C
Diff: 0 Page Ref:
Section: 01.12

Answer Key
Testname: CH1

- 33) A
Diff: 0 Page Ref:
Section: 01.12
- 34) E
Diff: 0 Page Ref:
Section: 01.00
- 35) C
Diff: 0 Page Ref:
Section: 01.08
- 36) B
Diff: 0 Page Ref:
Section: 01.05
- 37) C
Diff: 0 Page Ref:
Section: 01.06
- 38) B
Diff: 0 Page Ref:
Section: 01.04
- 39) A
Diff: 0 Page Ref:
Section: 01.02
- 40) A
Diff: 0 Page Ref:
Section: 01.16
- 41) C
Diff: 0 Page Ref:
Section: 01.08
- 42) C
Diff: 0 Page Ref:
Section: 01.08
- 43) A
Diff: 0 Page Ref:
Section: 01.16
- 44) D
Diff: 0 Page Ref:
Section: 01.05
- 45) C
Diff: 0 Page Ref:
Section: 01.09
- 46) E
Diff: 0 Page Ref:
Section: 01.15
- 47) C
Diff: 0 Page Ref:
Section: 01.11
- 48) C
Diff: 0 Page Ref:
Section: 01.04

Answer Key
Testname: CH1

- 49) C
Diff: 0 Page Ref:
Section: 01.09
- 50) D
Diff: 0 Page Ref:
Section: 01.07
- 51) C
Diff: 0 Page Ref:
Section: 01.08
- 52) A
Diff: 0 Page Ref:
Section: 01.01
- 53) D
Diff: 0 Page Ref:
Section: 01.03
- 54) E
Diff: 0 Page Ref:
Section: 01.16
- 55) C
Diff: 0 Page Ref:
Section: 01.11
- 56) E
Diff: 0 Page Ref:
Section: 01.02
- 57) C
Diff: 0 Page Ref:
Section: 01.11
- 58) A
Diff: 0 Page Ref:
Section: 01.03
- 59) C
Diff: 0 Page Ref:
Section: 01.03
- 60) D
Diff: 0 Page Ref:
Section: 01.07
- 61) C
Diff: 0 Page Ref:
Section: 01.08
- 62) D
Diff: 0 Page Ref:
Section: 01.08
- 63) C
Diff: 0 Page Ref:
Section: 01.12
- 64) E
Diff: 0 Page Ref:
Section: 01.02

Answer Key
Testname: CH1

- 65) B
Diff: 0 Page Ref:
Section: 01.07
- 66) C
Diff: 0 Page Ref:
Section: 01.02
- 67) E
Diff: 0 Page Ref:
Section: 01.03
- 68) A
Diff: 0 Page Ref:
Section: 01.01
- 69) D
Diff: 0 Page Ref:
Section: 01.08
- 70) B
Diff: 0 Page Ref:
Section: 01.11
- 71) E
Diff: 0 Page Ref:
Section: 01.12
- 72) C
Diff: 0 Page Ref:
Section: 01.05
- 73) C
Diff: 0 Page Ref:
Section: 01.08
- 74) D
Diff: 0 Page Ref:
Section: 01.16
- 75) C
Diff: 0 Page Ref:
Section: 01.16
- 76) C
Diff: 0 Page Ref:
Section: 01.04
- 77) D
Diff: 0 Page Ref:
Section: 01.07
- 78) C
Diff: 0 Page Ref:
Section: 01.05
- 79) A
Diff: 0 Page Ref:
Section: 01.13
- 80) D
Diff: 0 Page Ref:
Section: 01.14

Answer Key
Testname: CH1

- 81) D
Diff: 0 Page Ref:
Section: 01.11
- 82) E
Diff: 0 Page Ref:
Section: 01.13
- 83) A
Diff: 0 Page Ref:
Section: 01.06
- 84) D
Diff: 0 Page Ref:
Section: 01.07
- 85) C
Diff: 0 Page Ref:
Section: 01.12
- 86) E
Diff: 0 Page Ref:
Section: 01.01
- 87) B
Diff: 0 Page Ref:
Section: 01.01
- 88) D
Diff: 0 Page Ref:
Section: 01.07
- 89) C
Diff: 0 Page Ref:
Section: 01.06
- 90) C
Diff: 0 Page Ref:
Section: 01.10
- 91) C
Diff: 0 Page Ref:
Section: 01.12
- 92) C
Diff: 0 Page Ref:
Section: 01.12
- 93) B
Diff: 0 Page Ref:
Section: 01.07
- 94) C
Diff: 0 Page Ref:
Section: 01.12
- 95) C
Diff: 0 Page Ref:
Section: 01.00
- 96) D
Diff: 0 Page Ref:
Section: 01.16

Answer Key

Testname: CH1

97) A

Diff: 0 Page Ref:
Section: 01.14

98) B

Diff: 0 Page Ref:
Section: 01.10

99) B

Diff: 0 Page Ref:
Section: 01.09

100) B

Diff: 0 Page Ref:
Section: 01.11

101) C

Diff: 0 Page Ref:
Section: 01.13

102) D

Diff: 0 Page Ref:
Section: 01.08

103) D

Diff: 0 Page Ref:
Section: 01.05

104) A

Diff: 0 Page Ref:
Section: 01.04

105) B

Diff: 0 Page Ref:
Section: 01.15

106) A

Diff: 0 Page Ref:
Section: 01.11

107) E

Diff: 0 Page Ref:
Section: 01.12

108) A

Diff: 0 Page Ref:
Section: 01.14

109) B

Diff: 0 Page Ref:
Section: 01.12