

Chapter 1 Oral Cavity

TRUE-FALSE QUESTIONS

- ___ 1. Ankyloglossia is another name for “tongue tied.”
- ___ 2. The uvula is classified as tonsillar pillars.
- ___ 3. Projections on the cortical plate are exostoses of bone.
- ___ 4. Circumvallate papillae are found on the hard palate.
- ___ 5. Beneath the incisive papilla is an injection site called the greater palatine foramen.
- ___ 6. Torus palatinus is seen on the soft palate.
- ___ 7. Lingual tonsils are enlarged lymphoid tissues.
- ___ 8. A muscle that can raise the tongue upward is called the mylohyoid muscle.

MULTIPLE-CHOICE QUESTIONS

- 9. The oral vestibule is bordered by the lips and cheeks. The oral cavity extends posteriorly to the soft palate.
 - A. Both statements are true
 - B. The first statement is true; the second is false
 - C. The first statement is false; the second is true
 - D. Both statements are false
- 10. Another name for the lateral pterygoid plate is the:
 - A. Palatoglossal arch
 - B. Lingual tonsils
 - C. Anterior pillar
 - D. Posterior pillar
 - E. None of the above
- 11. Which structure cannot be seen (clinically) when viewing the oral cavity?
 - A. Fovea palatinae
 - B. Posterior pharyngeal wall

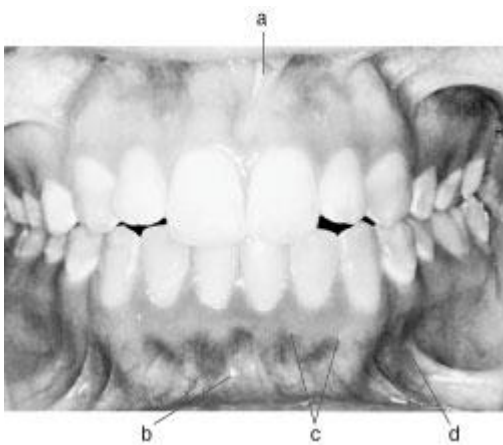
- C. Laryngeal pharynx
 - D. Sublingual fold
12. Which is not a structure of the hard palate?
- A. Incisive papilla
 - B. Rugae
 - C. Greater palatine foramen
 - D. Uvula
13. The small bony growths that are sometimes seen on the buccal cortical plate of the maxillae and the mandible are called:
- A. Torus palatinus
 - B. Mandibular tori
 - C. Exostoses
 - D. Tuberosities
14. Which structure is red or dark in color, when compared with other soft tissue structures?
- A. Mucogingival junction
 - B. Alveolar mucosa
 - C. Labial frenum
 - D. Gingiva
15. Which clinical manifestation would not lead to further investigation (e.g., referral to physician, biopsy)?
- A. Red, painful tongue
 - B. Moderate plaque on all teeth
 - C. Gingival bleeding in a child with excellent oral hygiene
 - D. Painful spots throughout the oral cavity
16. Which structure is most closely located to each side of the lingual frenum?
- A. Sublingual caruncle
 - B. Sublingual fold
 - C. Submandibular salivary glands
 - D. Lingual tonsils
 - E. All of the above
17. A space between the maxillary central incisors that is often the result of an elongated labial frenum is a(n):
- A. Incisive space

- B. Interdental papilla
 - C. Diastema
 - D. Leeway space
 - E. None of the above
18. The indentation at the midline above the upper lip is the:
- A. Labial border
 - B. Vermillion zone
 - C. Medial process
 - D. Philtrum
19. Which is another name for the misplaced sebaceous glands often found on the oral mucosa?
- A. Follicles
 - B. Fordyce granules
 - C. Rugae
 - D. Sublingual ducts
20. The _____ is most susceptible to injuries due to its thin mucosa:
- A. Hard palate
 - B. Buccal mucosa
 - C. Floor of the mouth
 - D. Tongue
 - E. Attached gingiva
21. The posterior portion of the soft palate is a part of the:
- A. Oral pharynx
 - B. Posterior nasal spine
 - C. Fovea palatinae
 - D. Esophagus

CASE STUDY: A generally healthy man in his forties is curious about “little raised yellow spots” on his buccal mucosa. He has noticed them in the past but he didn’t ask about them until now.

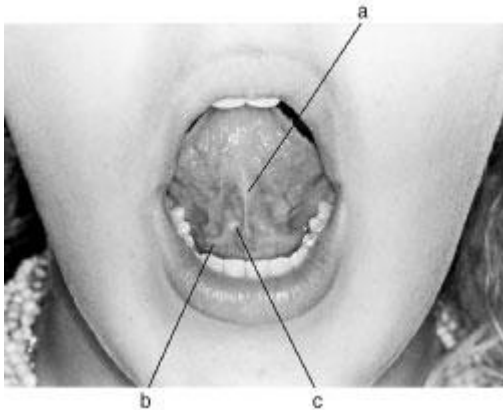
22. The yellow spots are most likely:
- A. Vallate papillae
 - B. Kaposi’s spots

- C. Fordyce granules
D. Measles
23. These spots normally function as:
- A. Taste buds
B. A characteristic of a malignancy
C. Sebaceous glands
D. An infectious viral illness
24. Identify the structures in Figure 1-1:



- a.
b.
c.
d.

25. Identify the structures in Figure 1-2:



- a.
- b.
- c.

Chapter 1

Oral Cavity

1. True
2. False. The uvula is a projection that extends from the posterior midline area of the soft palate.
3. True
4. False. They are found on the tongue.
5. False. It is called the incisive foramen.
6. False. It is seen on the hard palate.
7. True
8. True
9. B. The oral cavity extends to the palatine tonsils.
10. E
11. C
12. D
12. C
14. B
15. B
16. A
17. C
18. D
19. B
20. C
21. A

- 22. C
- 23. C
- 24.
 - a. Maxillary labial frenum
 - b. Mandibular labial frenum
 - c. Mucogingival junction
 - d. Mucobuccal fold
- 25.
 - a. Lingual frenum
 - b. Sublingual fold
 - c. Sublingual caruncle